

PERSHING 50



DATI PRINCIPALI

Cantiere/Modello	Pershing 50	Categoria	Usato
Lunghezza	15,83 mt	Larghezza	4,38 mt
Anno immat.	-	Anno costruzione	2007
Velocità massima	36 nodi	Velocità crociera	24 nodi
Zavorra	-	Stazza	-
Dislocamento	19000 t	Pescaggio	1,35 mt
HP Fiscali	-	Scadenza RINA	2028
Bandiera	Italiana	Visibilità	-
Prezzo	Euro 390.000		
Note prezzo	-		

COMBUSTIBILI E MOTORI

Nr. serbatoi	1	Capacità serbatoi	2400	Materiale serbatoi	Inox
Motori	MAN 1 x 800	Tipo carburante	Diesel	Ore moto	920
Revisione motori	Regolare	Tipo elica	-	Trasmissione	Linea d'asse

MATERIALE COSTRUZIONE

Scafo	Vtr	Tuga	Vtr+teak	Coperta	Vtr+teak
--------------	-----	-------------	----------	----------------	----------

IDRAULICI

Serbatoi acqua	1 x 500 lt	Materiale serbatoi	Inox	Tipo boiler	-
Dissalatore	Non presente	Autoclave	Presente	Boiler	Presente

ELETTRICI

Tensione	12/220	Nr. batterie	5	Capacità batterie	-
Generatore	Kohler (9 Kw)	Carica batterie	Presente	Inverter	Presente

BREVE DESCRIZIONE

Predisposizione interna : una cabina con letto matrimoniale, una cabina con matrimoniale alla francese, una doppia con letti in piano, cabina equipaggio con wc, dinette con cucina, 2 bagni con doccia.

Accessorata con antenna satellitare con decoder e digitale terrestre, impianto tv + impianto stereo, generatore di corrente Kohler 9 kw, aria condizionata, boiler acqua calda, cucina completa compreso microonde - piastra in vetroceramica + frigorifero esterno, cuscineria completa, impianto acque nere, pavimento interno in legno, teak esterno compresa plancia di poppa, hard top elettrico, passerella idraulica, elica di prua, ecoscandaglio, gps, pilota automatico, plotter, radar.

Visibile presso la ns sede di Salerno. Possibilità di averla pronto boa con consegna a partire da Maggio.















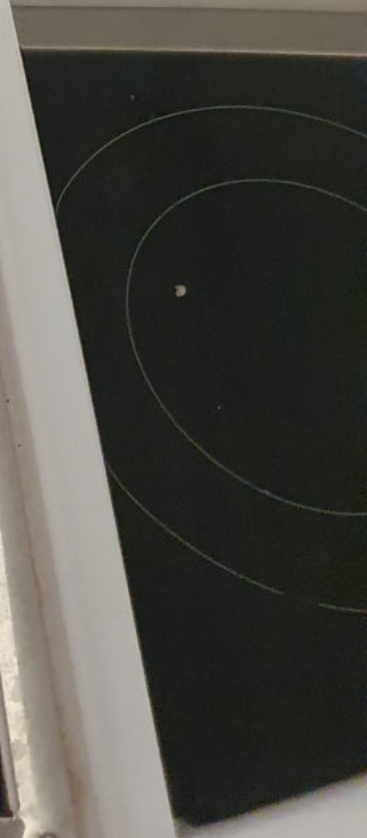
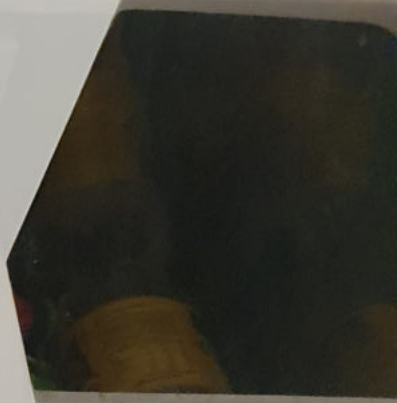




PERSEUS





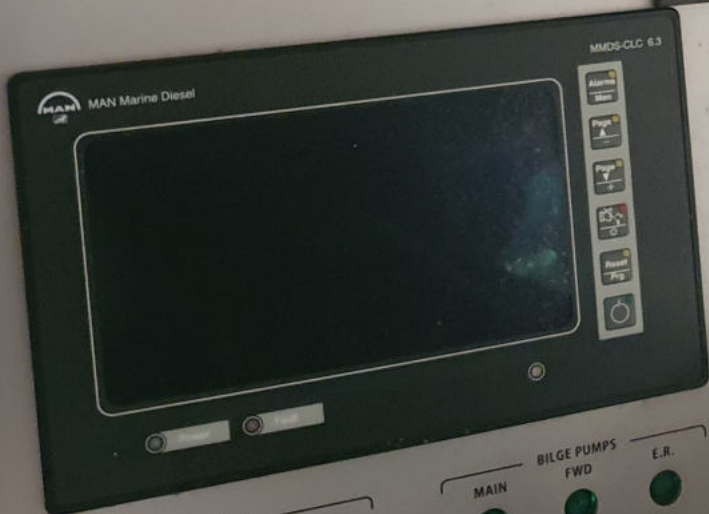
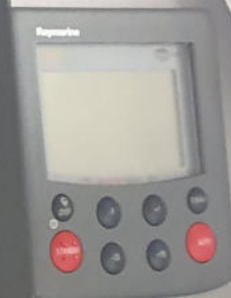






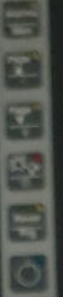
PERSHING







MICRO-DOCK 400



SPARE
OPEN
CLOSE
GARGWET
IN
OUT
SPARE
UP
DOWN
SPARE
ON
OFF
WINCH
UP

EASISHING

CONTROL
EASIDOCK
AUTOTROLL
CONTROL/SET
CONTROL
ONE LEVER
WARM UP
MODE









































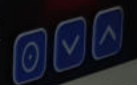






VOLT

Run in Manual Cycle
Normal Lubrication Pressure




KOHLER
ADVANCED DIGITAL CONTROL

CODE	DEFINITION
AF	Auxiliary Fault
CC	Crank Crank
HB	High Battery Voltage
HE	High Engine Temp
LE	Low Battery Voltage
LL	Low Lub Oil Level
LCL	Low Coolant Level
LDC	Low Oil Pressure
LDP	Low Oil Pressure
OC	Over Current
OF	Over Frequency
OS	Over Speed
OU	Over Voltage
UP	Under Frequency
UU	Under Voltage

OFF/RESET

RUN



KOHLER

PARAMETER	UNIT	VALUE
MAX RPM	RPM	3000
MAX TORQUE	NM	150
MAX POWER	KW	15
MAX CURRENT	A	30
MAX VOLTAGE	V	28
MAX OIL PRESSURE	BAR	10
MAX COOLANT TEMP	°C	100
MAX ENGINE TEMP	°C	100
MAX BATTERY VOLTAGE	V	28
MAX LUB OIL LEVEL	L	10
MAX CRANK CRANK	°	180

WARNING



Do not touch the engine or electrical components when the engine is running.

CAUTION



Do not touch the engine or electrical components when the engine is hot.

KOHLER
POWER SYSTEMS



Pressure Gauge

230 VOLT

CHILLER ORGANIZER

8.8.8

COOL ●
HEAT ●
SWP ●
CP ●

C MODE ON OFF

ondaria '87 srl CE

Domestic **ondaria**
MADE IN ITALY

Via Vesulvio, 18 - 20054 NOVA MILANESE - MI - ITALY
Tel. +39 0362 44182/364597 - Fax +39 0362 452226
e-mail: condanot@tin.it - web site: www.condaria.com

NOTE ON REFRIGERANT R-407C

IN CASO DI PERDITE SIGNIFICATIVE DI REFRIGERANTE (OLTRE IL 30% DELLA CARICA TOTALE) SUGGERIAMO DI RIMUOVERE LA CARICA ESISTENTE, RICOPIRARLA DOPO IL RECUPERO DELLA CARICA, FARE IL VUOTO NELL'IMPIANTO E RICARICARLO. LA RICARICA DEVE ESSERE EFFETTUATA CON REFRIGERANTE LIQUIDO ATTRAVERSO L'ATACCO PRESENTE DEL COMPRESSORE.

IN CASE OF SIGNIFICANT LEAKS OF REFRIGERANT (MORE THAN 30% OF THE TOTAL CHARGE) WE SUGGEST TO REMOVE THE EXISTING SYSTEM CHARGE BY MEANS OF RECOVERY. AFTER RECOVERING THE CHARGE, EVACUATE THE SYSTEM AND REFILL THROUGH OF THE SYSTEM MUST BE MADE WITH LIQUID REFRIGERANT INTO THE DISCHARGE POINT OF THE SYSTEM COMPRESSOR.

AD OGNI NUOVO AVVIAMENTO DOPO UN ARRESTO PROLUNGATO, CONTROLLARE IL CORRETTO FUNZIONAMENTO DELLA POMPA ACQUA DI MARE ED ACCERTARSI CHE CI SIA CIRCOLAZIONE.

WHEN STARTING THE UNIT AFTER A PROLONGED SHUTDOWN, CHECK THE CORRECT OPERATION OF THE SEA WATER PUMP AND MAKE SURE OF PROPER CIRCULATION.

LAVARE IL CIRCUITO ACQUA DI MARE CON ACQUA DOLCE ALMENO UNA VOLTA L'ANNO.

RINSE SEA WATER CIRCUIT WITH FRESH WATER AT LEAST ONCE A YEAR.

ATTENZIONE CAUTION

TOGLIERE TENSIONE PRIMA DI APRIRE LO SCATTELLO

CUT POWER OFF BEFORE OPENING THE DOOR

Condaria non fa alcuna garanzia per l'uso improprio.

Condaria has no liability for improper use. (see 84-0130)

PERSHING 50/66

PCWM/FCL 6003 coil	REFRIGERANT R407C
WATER FLOW RATE (L/MIN)	8.0 / 10.0
WATER PRESSURE (BAR)	1.5
5904 02/87	15.5
Domestic	ondaria

CONDARIA S.p.A. VIA VESULVIO, 18 - 20054 NOVA MILANESE (MI) - ITALIA
TEL. +39 0362 44182 - FAX +39 0362 452226
E-MAIL: CONDANOT@TIN.IT - WWW.CONDARIA.COM

DISPLAY REMAINS ACTIVE
DURING GENERATOR OPERATION



KOHLER
ADVANCED DIGITAL CONTROL

CODE	DEFINITION
AF	Auxiliary Fault
CC	Crank Cycle
HB	High Battery Voltage
HE	High Engine Temp
LB	Low Battery Voltage
LCL	Low Coolant Level
LOC	Loss of Coolant
LOP	Low Oil Pressure
OC	Over Crank
OF	Over Frequency
OS	Over Speed
OV	Over Voltage
OF	Over Frequency

KOHLER

KOHLER CO. KOHLER WI. USA

MODEL 9EFOZD SERIAL 2131705

SPEC. GM30507-GA1

HZ: 50 RPM: 1500 FUEL: DIESEL

CONTINUOUS RATING BASED ON A MAXIMUM
TEMPERATURE RISE AT RATED LOAD
OF 120°C. ALTITUDE: 500 FT.
GENERATOR TYPE: ROTATING FIELD

OUTPUT	KW	KVA
SINGLE PHASE 25C	9.00	9.00
SINGLE PHASE 50C		
THREE PHASE 25C		
THREE PHASE 50C		
VOLTAGE 230/NA	AMPS 39.00	P.F. 1.0
INS. NEMA CLASS H	BATT. 12	V
MATL: 10E0ZD		

WARNING

In case of fire do not open
sound shield (compartment).

1. Shut down generator set(s).
2. Continuously discharge entire
contents of halon or CO2 portable
fire extinguisher through the port
(or other provision) immediately.



Fire Extinguisher Port

GM10148

WARNING



Automatic starting without warning.
Can cause severe injury or death.

Disconnect battery cables before
working on generator set. (Remove
negative (-) lead first when
disconnecting battery. Reconnect
negative (-) lead last when
reconnecting battery.)

345331



WDEED SinPower MS1 924

SmartCommand™
ZF MARINE ELECTRONICS, LLC
Mulhouse FR USA

STARBOARD
LATO DESTRO

PART NUMBER SC5000
SERIAL NUMBER 500020923
POWER 12VDC/24VDC 7A MAX.

11.4

CLUTCH

CAN 2

SERIAL

TACH

STA. B

ZF CAN 1

TACH

THROTTLE INTERLOCK











↑
TOP

95 R2 - 51 - 30 06



1973
1401874110000
1401874110000

101

SAE 100RTA







